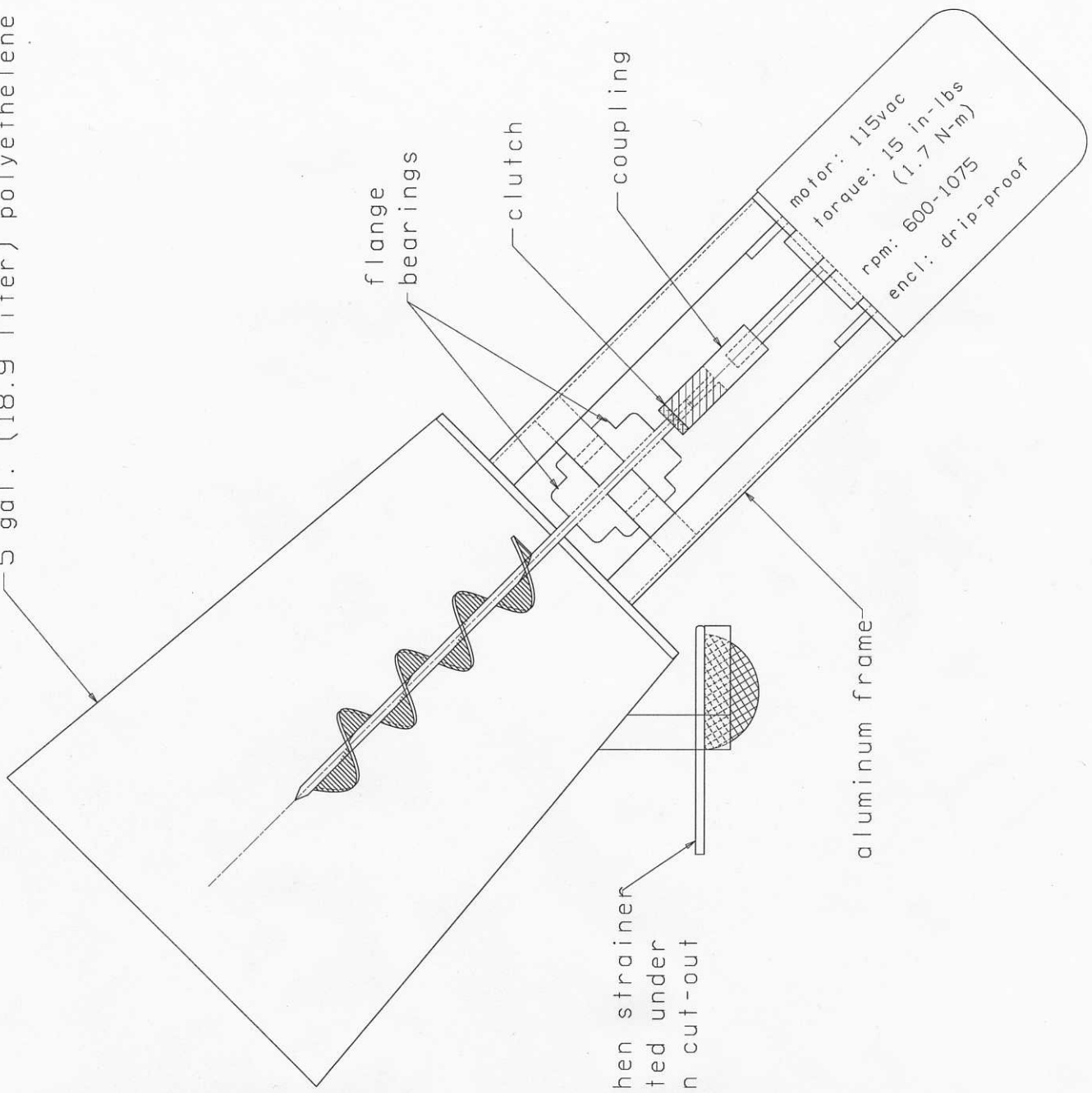


5 gal. (18.9 liter) polyethelene pail



flange
bearings

clutch

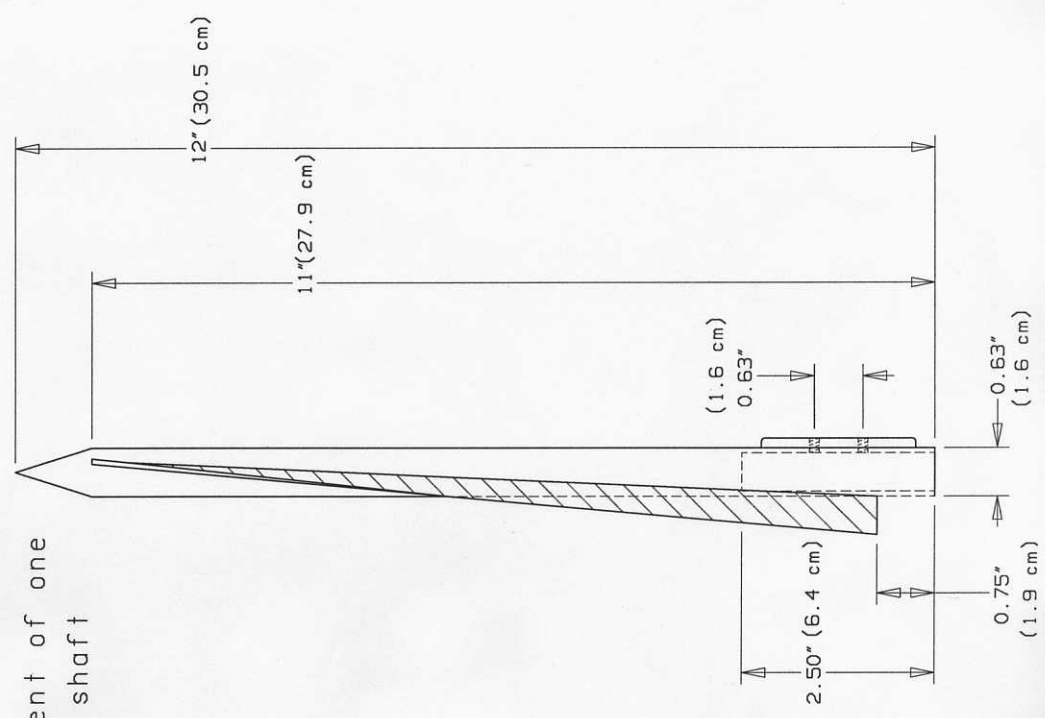
coupling

motor: 115vac
torque: 15 in-lbs
(1.7 N-m)
rpm: 600-1075
encl.: drip-proof

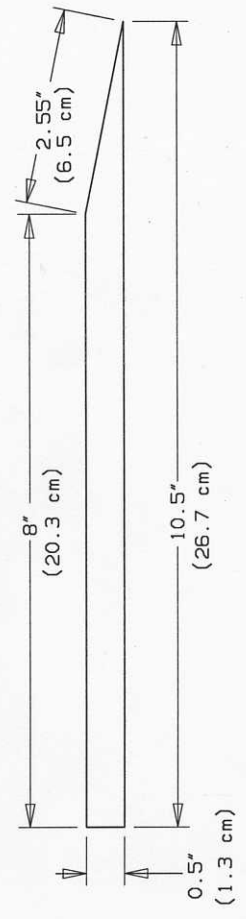
aluminum frame

kitchen strainer
mounted under
drain cut-out

attachment of one vane to shaft

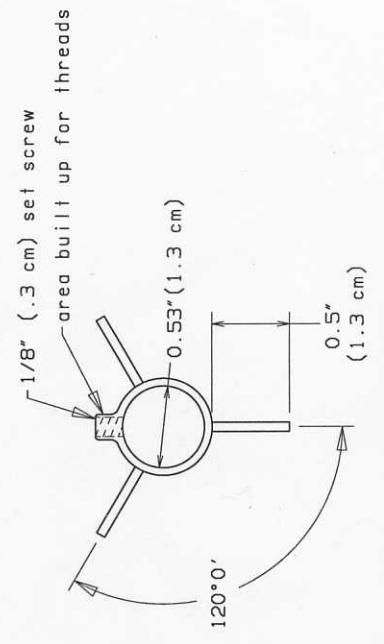


side view of vane (3 required)
the thickness of the vane is 16 ga.

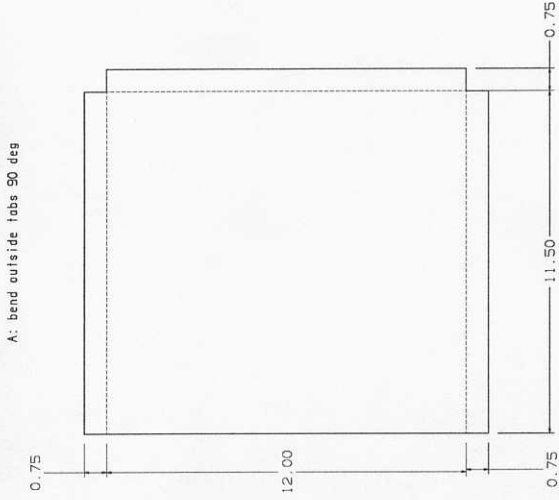


bottom end view

The three stainless steel vanes are space 120 deg. apart and spiral 120 deg in 10.25" (26 cm) of shaft length

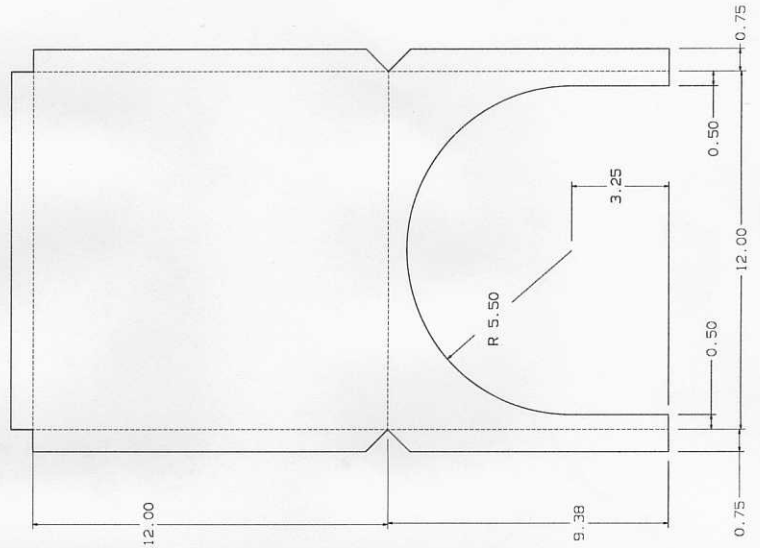


top sheathing

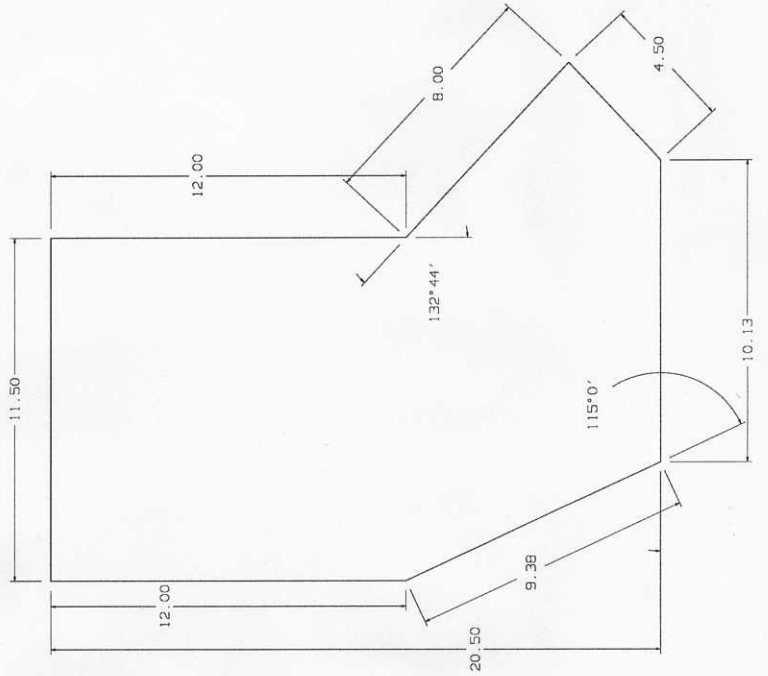


sheathing is 22 ga.
stainless steel

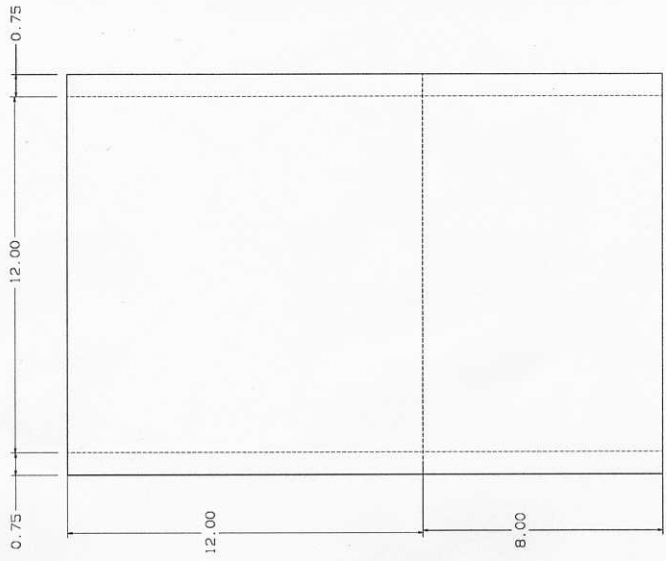
front sheathing



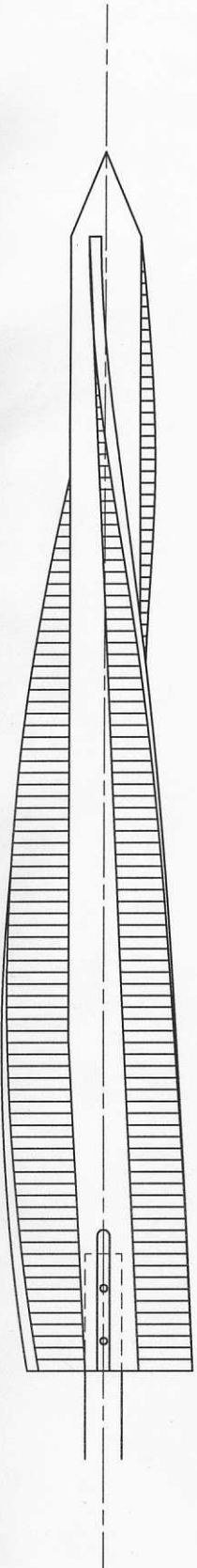
side sheathing



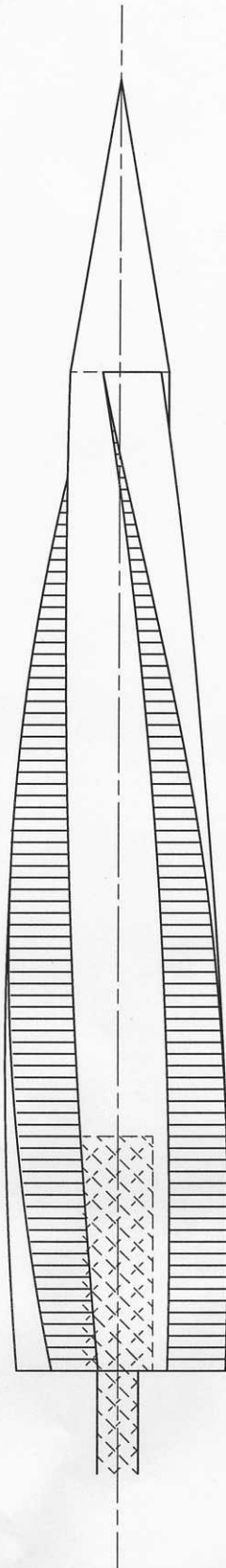
back sheathing



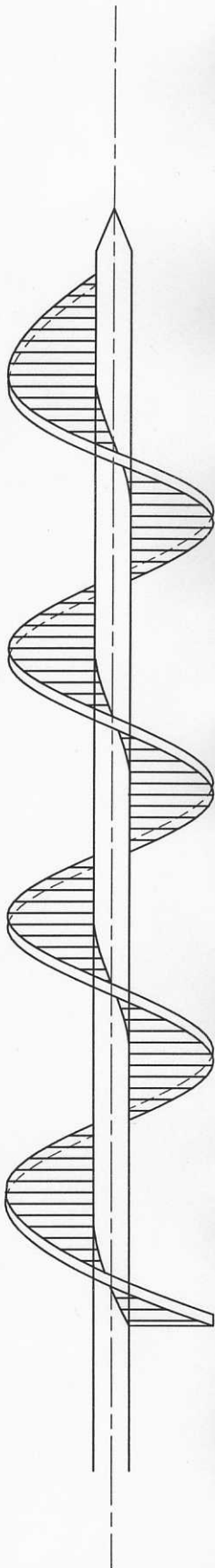
A



B

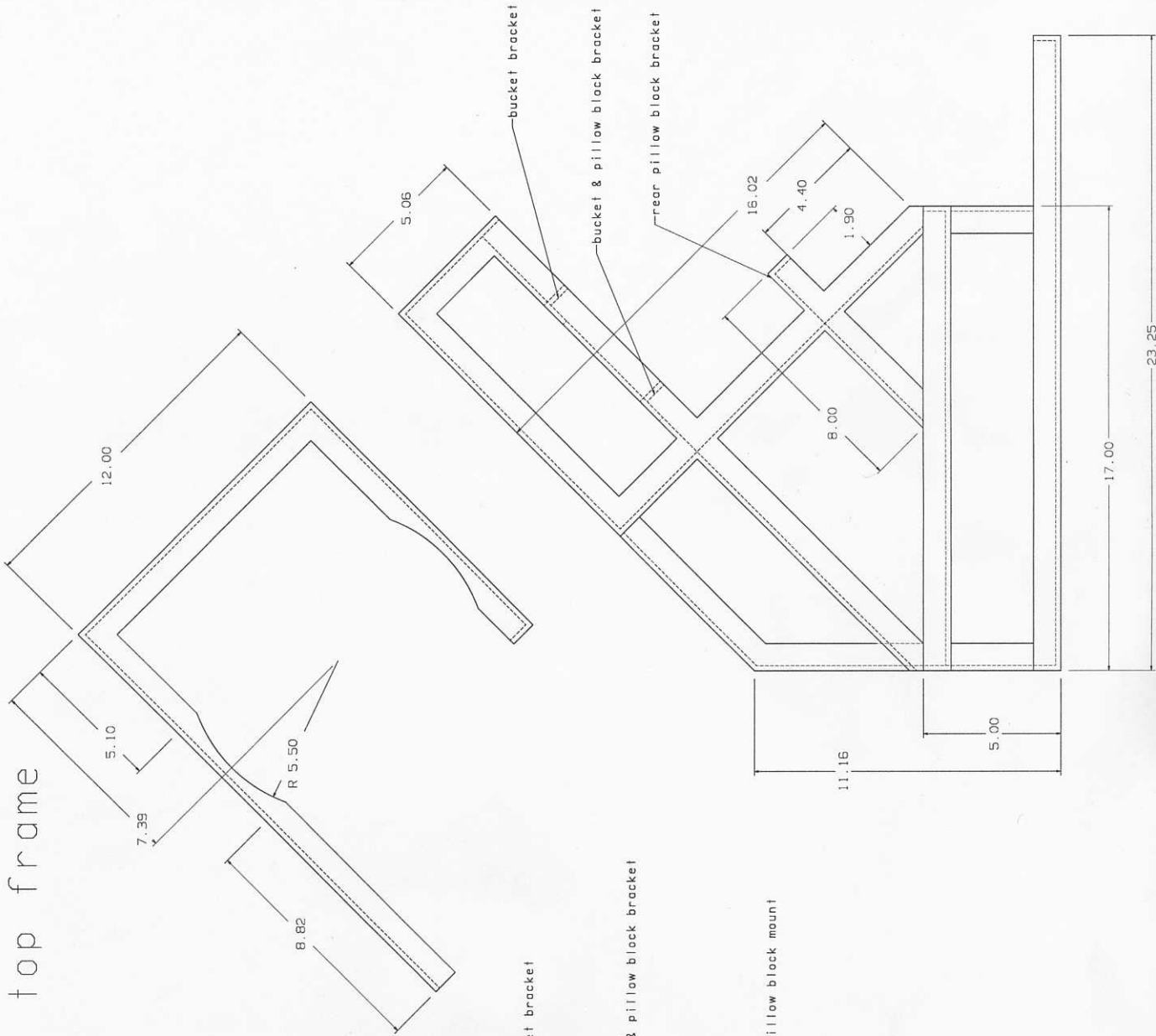


C

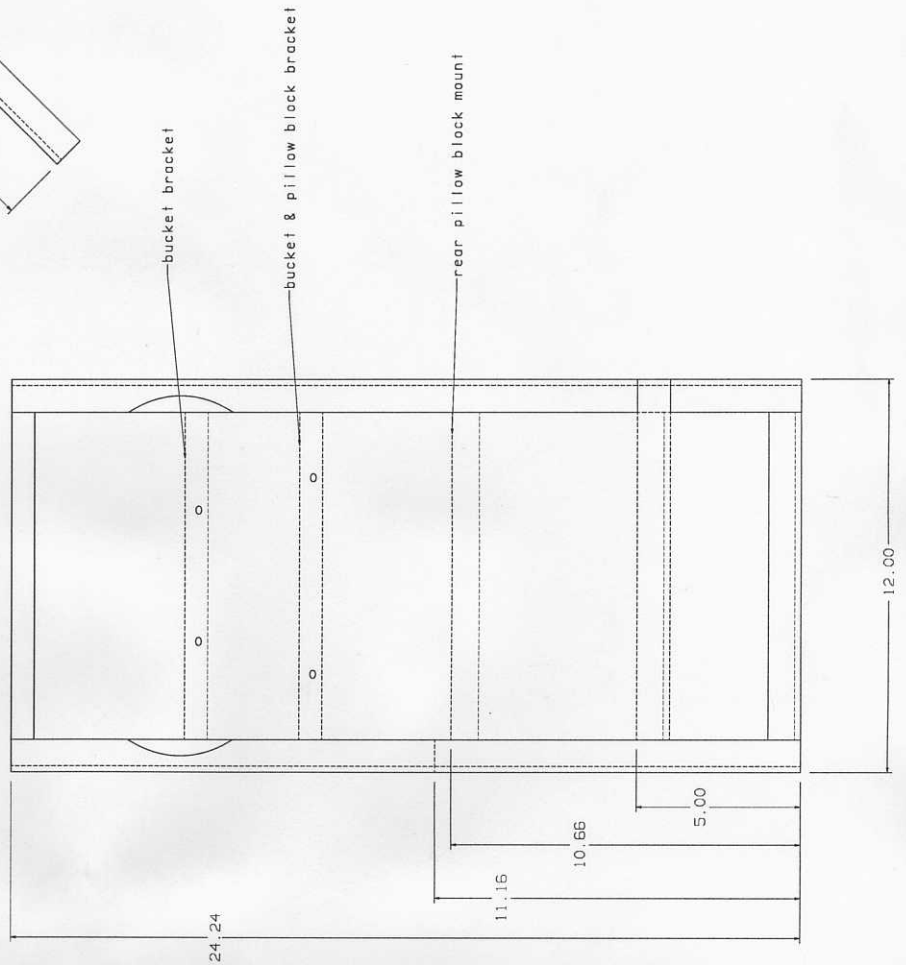


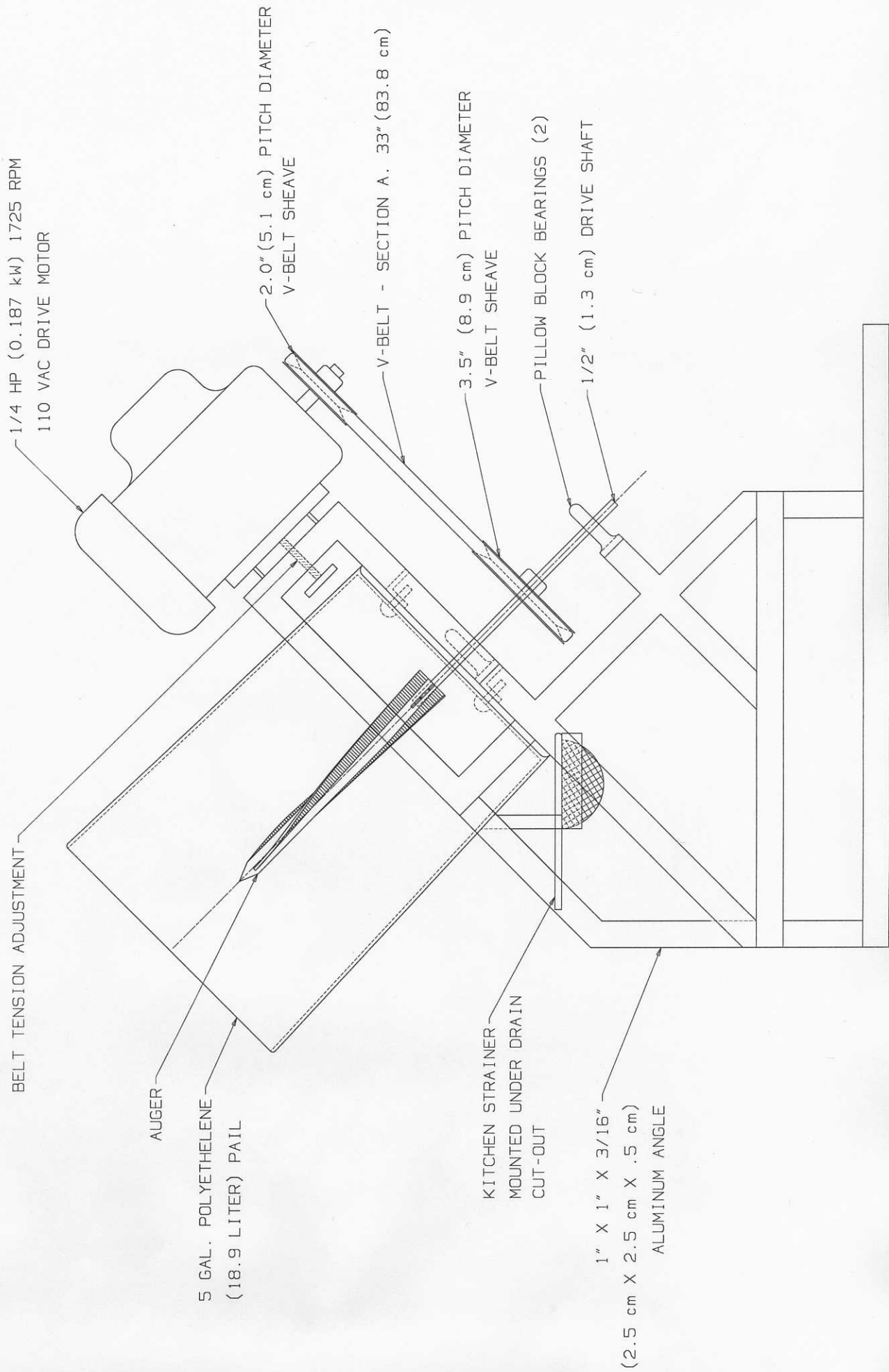
aluminum, or stainless steel

top frame

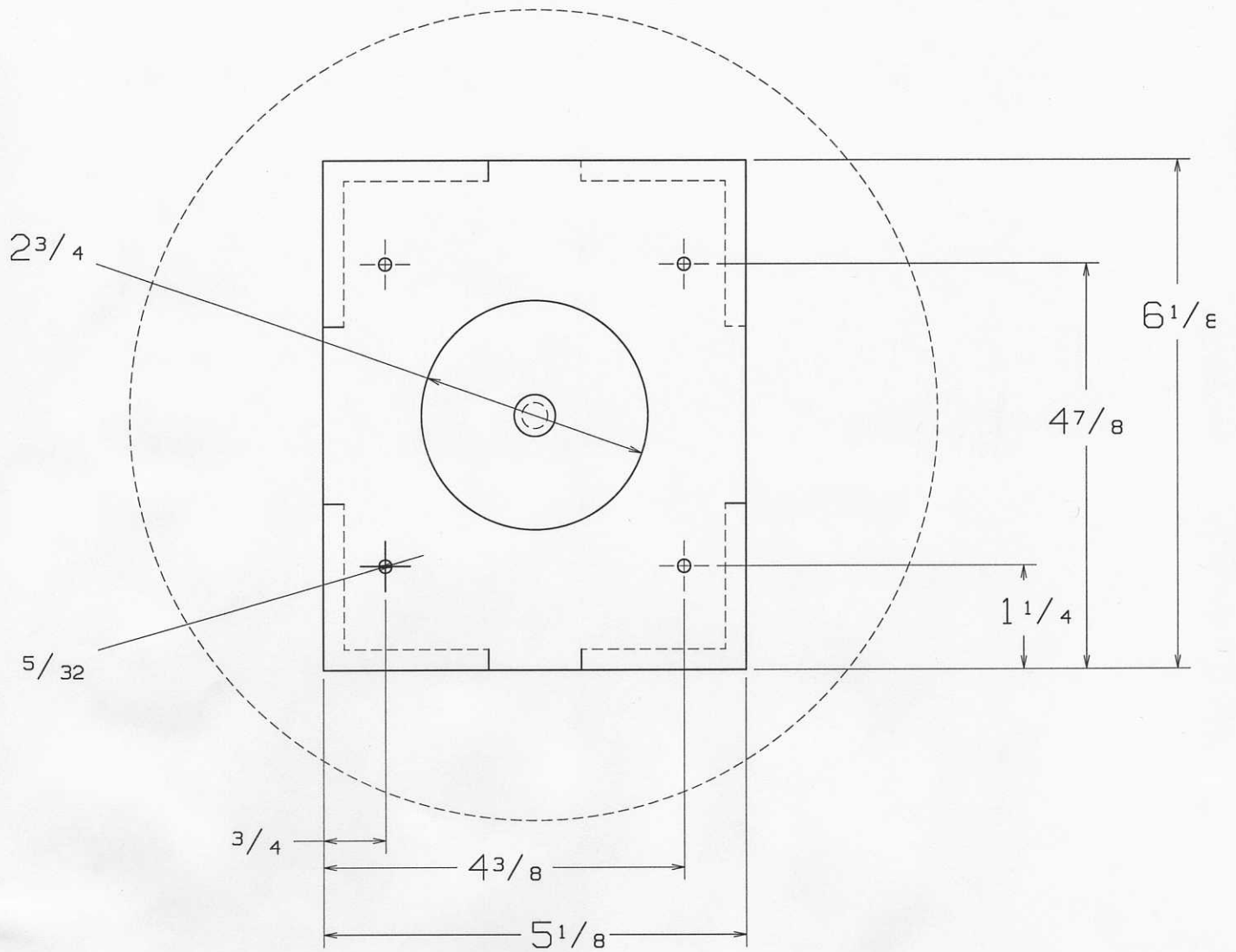


front view

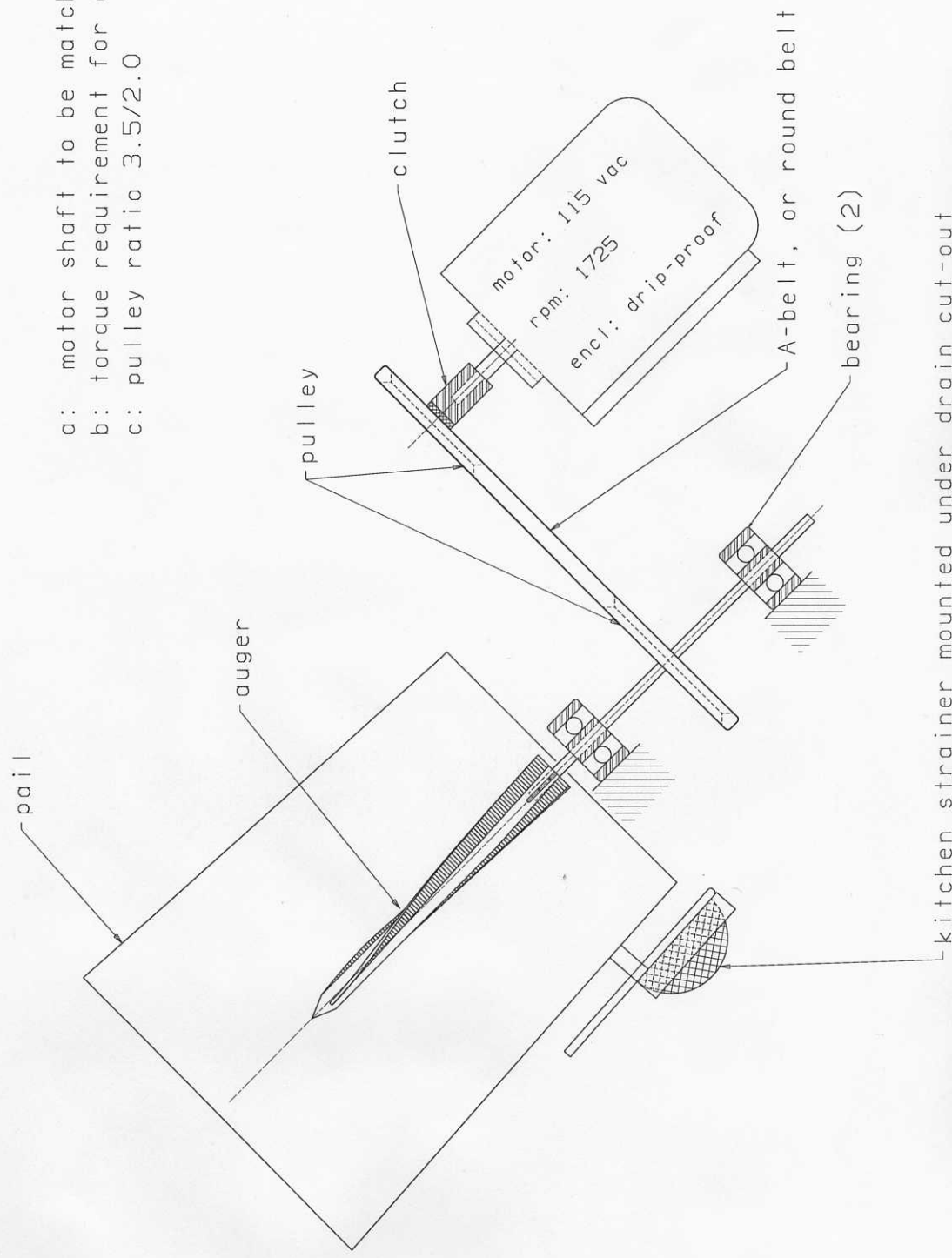




motor mount



- a: motor shaft to be matched to clutch bar
- b: torque requirement for auger 15 in-lbs
- c: pulley ratio 3.5/2.0



kitchen strainer mounted under drain cut-out